

These homes serve our most vulnerable populations and are especially important during the pandemic.

	CHILDREN	SENIORS	DISABLED	CAREER-AGED
HOUSEHOLDS	2.32M	2.38M	2.18M	
INDIVIDUALS	4.86M	2.83M	2.57M	5.83M

The number of people served by publicly supported homes have increasingly shifted towards seniors and individuals with disabilities.

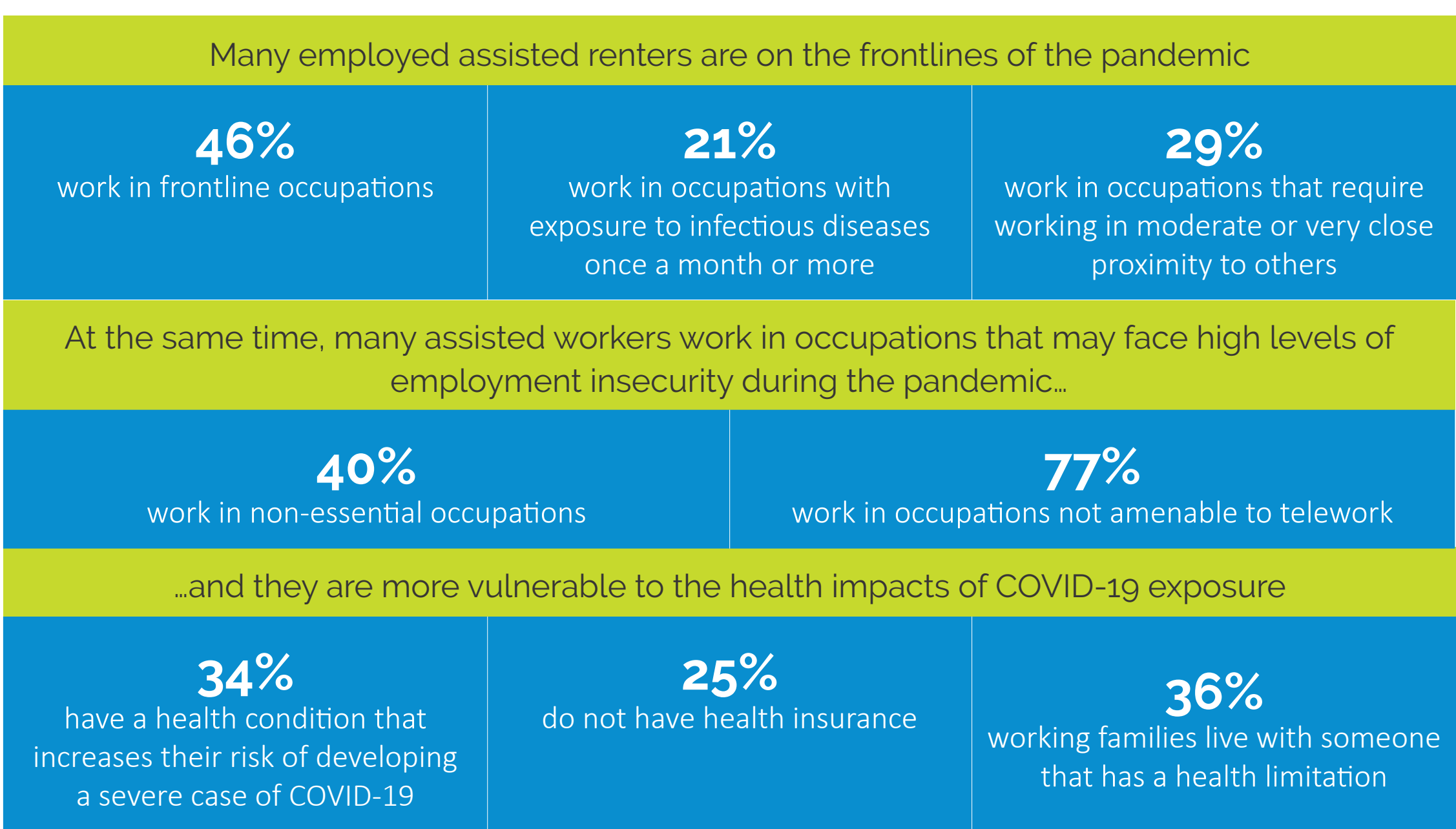
	CHILDREN	SENIORS	DISABLED	CAREER-AGED
HOUSEHOLDS	+1.5%	+5.9%	+4.2%	
INDIVIDUALS	-2.4%	+2.0%	+2.9%	-2.5%

But 12.14 million families and 29.74 million individuals are still in need.

	CHILDREN	SENIORS	DISABLED	CAREER-AGED
HOUSEHOLDS	4.42M	3.12M	3.69M	9.76M
INDIVIDUALS	9.46M	3.64M	4.65M	16.64M

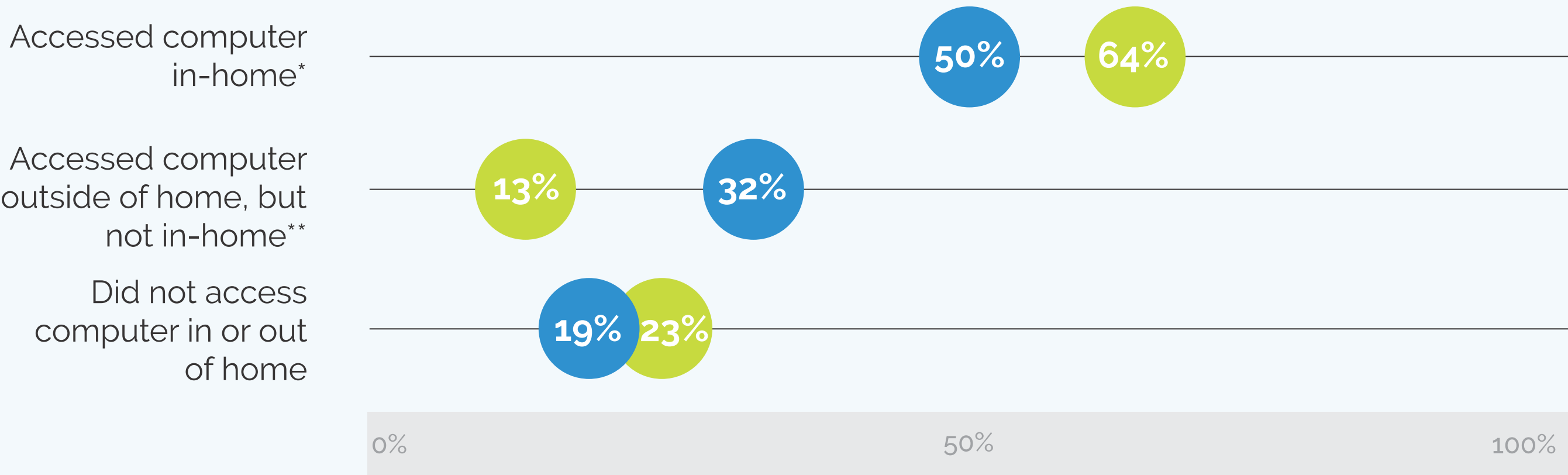
2020 Housing Impact Report Features examined unique challenges faced by children, seniors, people with disabilities, and career-age families living in publicly supported homes. These challenges may put these groups at higher risk of illness or further health or educational setbacks during the pandemic.

MANY CAREER-AGE FAMILIES WORK ON THE FRONTLINE

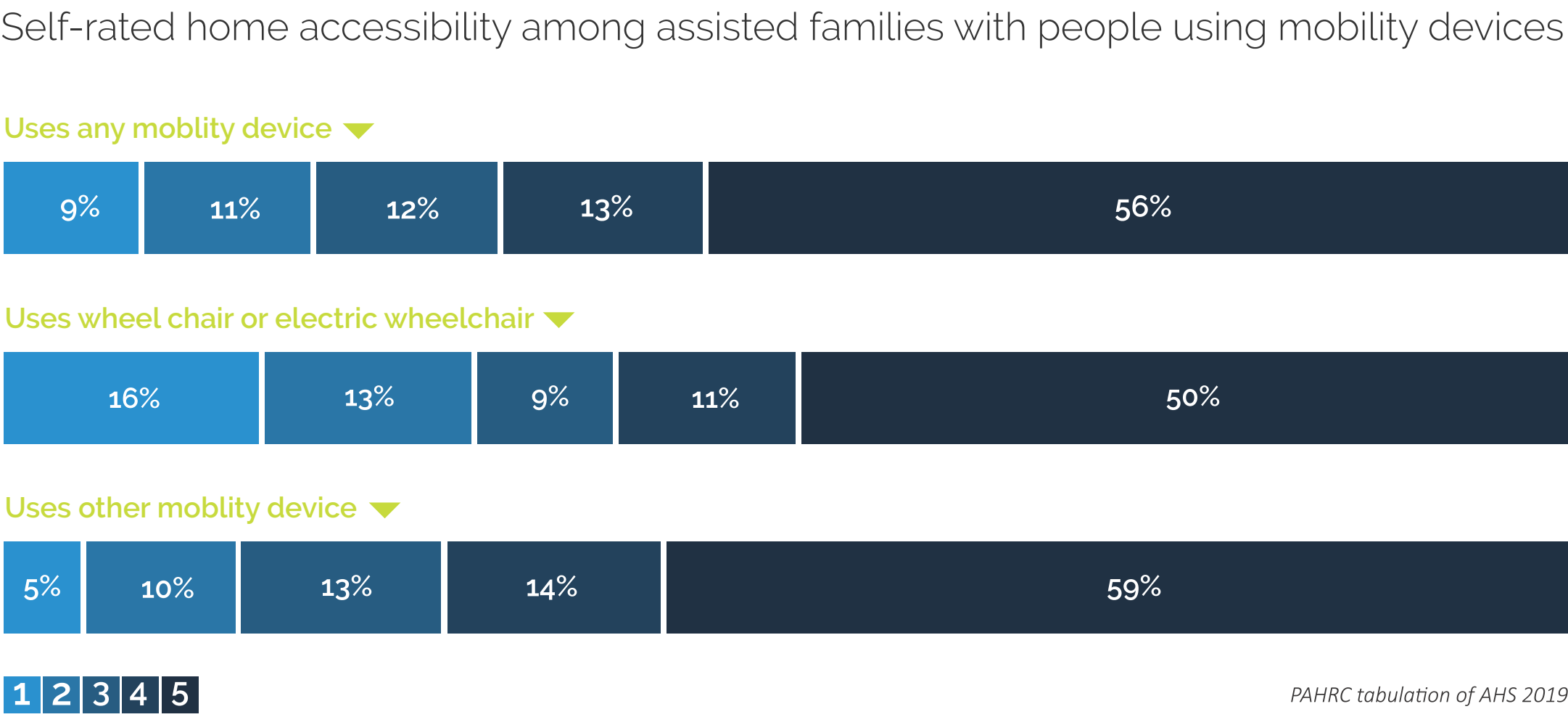


CHILDREN WITHOUT INTERNET ACCESS MAY FALL BEHIND IN SCHOOL

ASSISTED RENTERS with children have lower rates of in-home computer access compared to UNASSISTED RENTERS with children earning below 150% of the poverty line

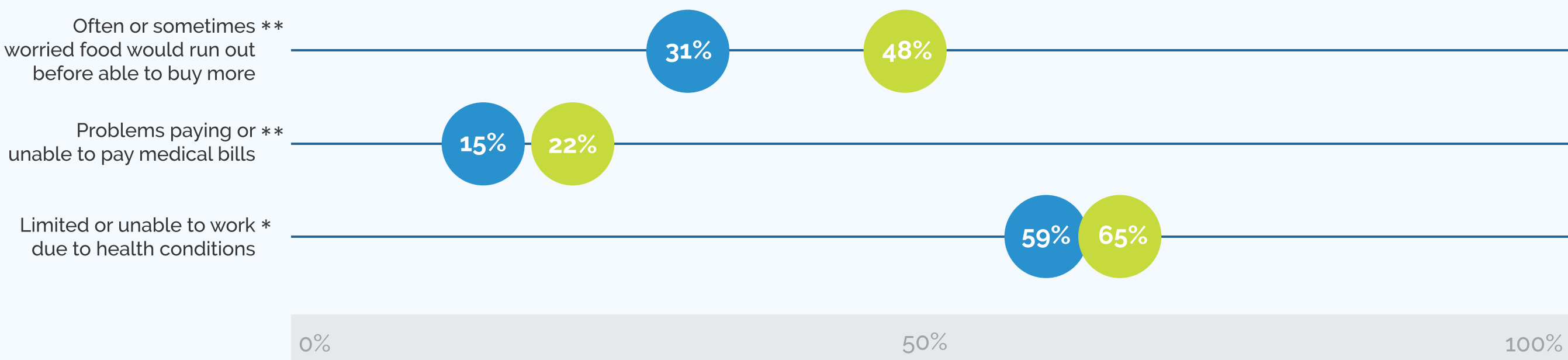


PEOPLE WITH A DISABILITY MAY HAVE MORE DIFFICULTY ACCESSING THINGS THEY NEED OR LIVING COMFORTABLY AT HOME



PRE-SENIORS MAY FACE HEALTH AND NUTRITION SETBACKS WHILE STAYING HOME

PRESENIORS living in publicly supported homes face similar levels of health limitations, but slightly higher rates of food and healthcare insecurity compared to assist SENIORS



PAHRC tabulation of National Health Interview Survey 2018 (P value = .0001, .0358, .157). *family level. *person level.